

Radial Gates

Waterfront design and manufacture a range of Radial gates to control the water levels for Rivers, Sea defences, and Marinas. Materials include Mild Steel with protective coatings and Stainless Steel.

With the application of its **advanced computer design and quotation programmes**, a rapid response is achieved in providing quality customer service and on-time deliveries.

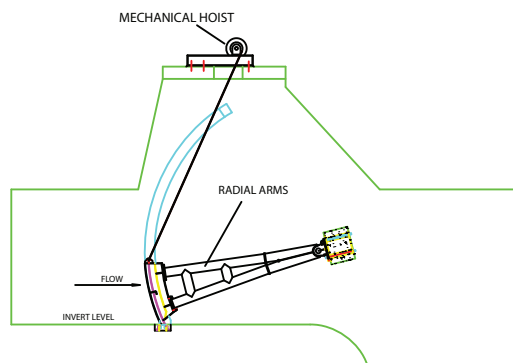
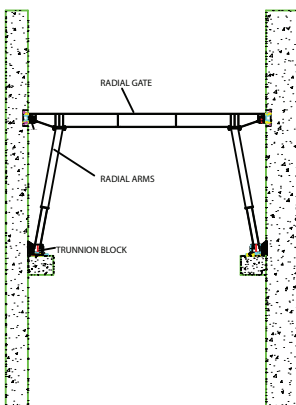
RADIAL GATES

- Size range:** 2.0m to 20.0 m wide, square or rectangular.
- Pressure:** Door Depth
- Materials:** Stainless Steel SS304, SS316, Mild Steel with protective coatings.
- Operation:** Hydraulic or Electrical actuation acting through Cylinders and Drum hoists



OPERATING GEAR

- Use:** Controlling the method of opening and closing the gate.
- Types:** Hydraulic-use of Cylinders - Electrical-use of Actuators and Gearbox - Mechanical-use of Drum hoists and wire rope



RADIAL GATE CLOSED

INSTALLATION

It is vital that installation is carried out by qualified personnel and Waterfront teams of qualified engineers are the only Guaranteed installer of this product.

WATERFRONT FLUID CONTROLS LTD

www.waterfrontfc.co.uk

The Hub (Unit 8), Digital Media Quarter, Pacific Drive, Glasgow, G51 1EA

TEL: +44 (0)141 427 7266 * FAX: +44 (0)141 427 2706 * E MAIL: SALES@WATERFRONTFC.CO.UK

Company Reg No: 305356 * VAT Reg No: 894898138